

West Hoathly Parish Neighbourhood Plan

“Policies Workshop 1”
18th October 2012



Let's Write Our Future!

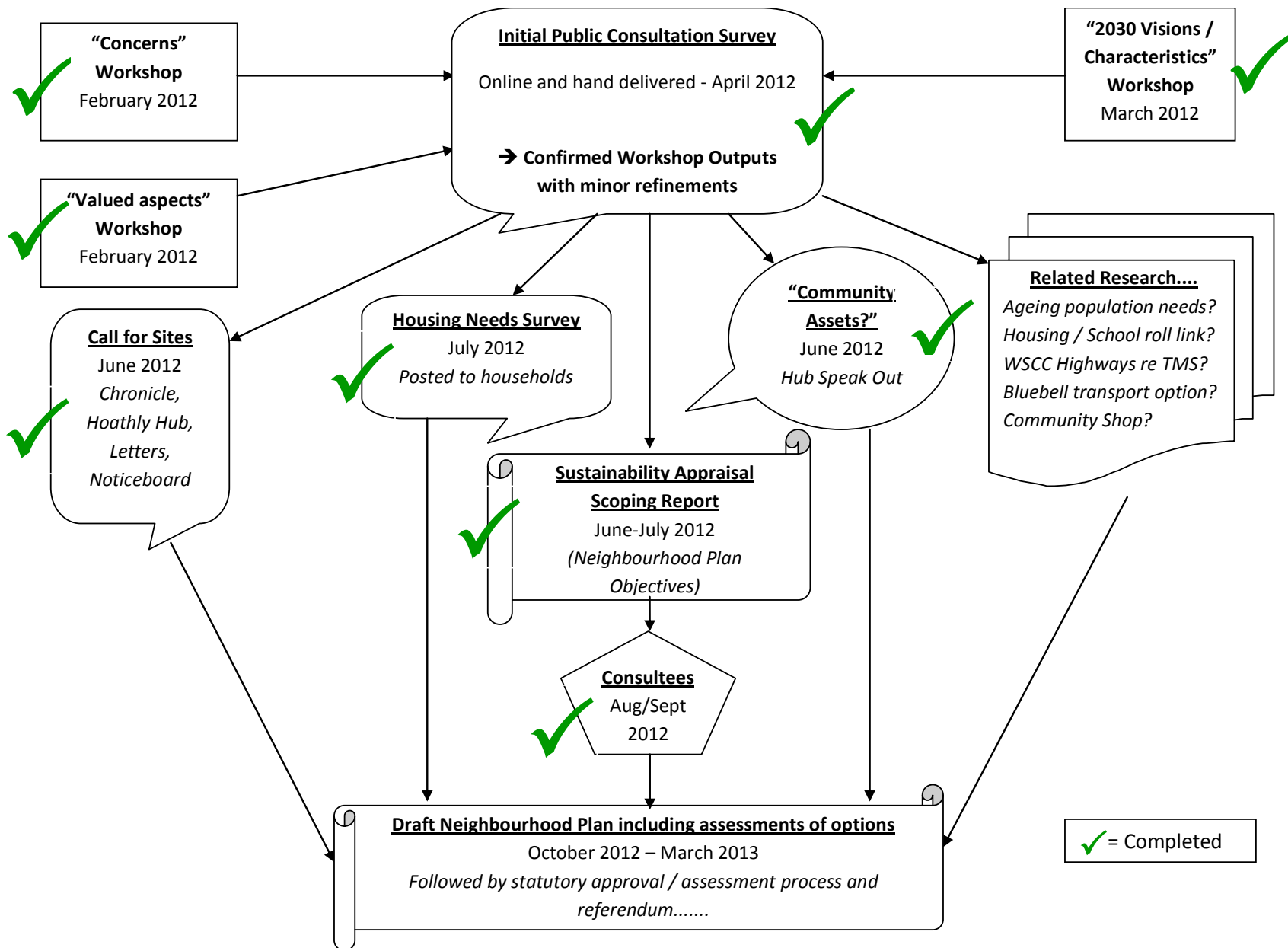
Programme this evening

- The WH Parish Neighbourhood Plan story so far
 - John Downe
- What are Planning Policies all about?
 - Amy Tyler-Jones
- Policies Workshop – focusing on the new (Draft) District Plan
 - ALL

Why a Neighbourhood Plan?

- **We have the option** to create a legally enforceable plan for our local area.
- It is **an opportunity for the Parish community to agree** how our area should progress and to attract funding to do it.
- **If we don't, others will decide for us!**
- Our neighbouring Parishes are doing it – **we don't want to be the “weakest link”** in Mid Sussex.
- **Community support and input** vital throughout

The West Hoathly Parish Neighbourhood Plan – Where are we up to?



The Next Step.....

- Define the Policies which This Parish needs to optimise our community's sustainability
- These Policies should cover:-
 - Refinement of District Policies for our area (This evening)
 - Specific Local Concerns and Priorities
 - Individual site protection or development plans
- Our Policies will become part of the Mid Sussex District Plan (if approved in a Parish referendum!)

