

**West Hoathly Neighbourhood Plan
PROGRAMME - Workshop 27 July 2013**

TIMINGS ARE FLEXIBLE

Welcome - as you arrive - Take a Post-It, please look at the information displayed (the revised policy wording and Sustainability Assessment tables/matrices) write your comments in a few large words, and stick Post-Its on the pages displayed.

10.00 Phil Turner. Planning Aid. Independent facilitator. **Explanation of the Process of the Plan.**

10.05 John Downe. **Progress on the Neighbourhood Plan. Changes resulting from the 22 June workshop.**

Comments received from residents.

10.15 Using Post-Its, please look at the information displayed and write your comments and suggestions for wording.

10.30 Questions about the policies and changes.

WHP13 Site for New Homes: Discussion on proposal, alternative approaches and policy wording.

11.00 Strategic Environmental Assessment. Considering the draft Sustainability Appraisal. This can be done by working in groups on each table top, or everyone in open session can work together using the matrix sheets.

Consider the alternative sites. Think about their viability. Suggest the environmental impacts.

11.45 Open session. Results of the working. Questions. Discussion on the way forward

12.00 End

Philip A Turner RIBA (Retd) MRTPI (Retd)
Volunteer, Planning Aid

01962 863657

p.turner@semantise.com

www.planningaid.rtpi.org.uk





- Empower

- Collaborate

- Involve

- Consult

- Inform

To get to
empowerment

you are
collaborating

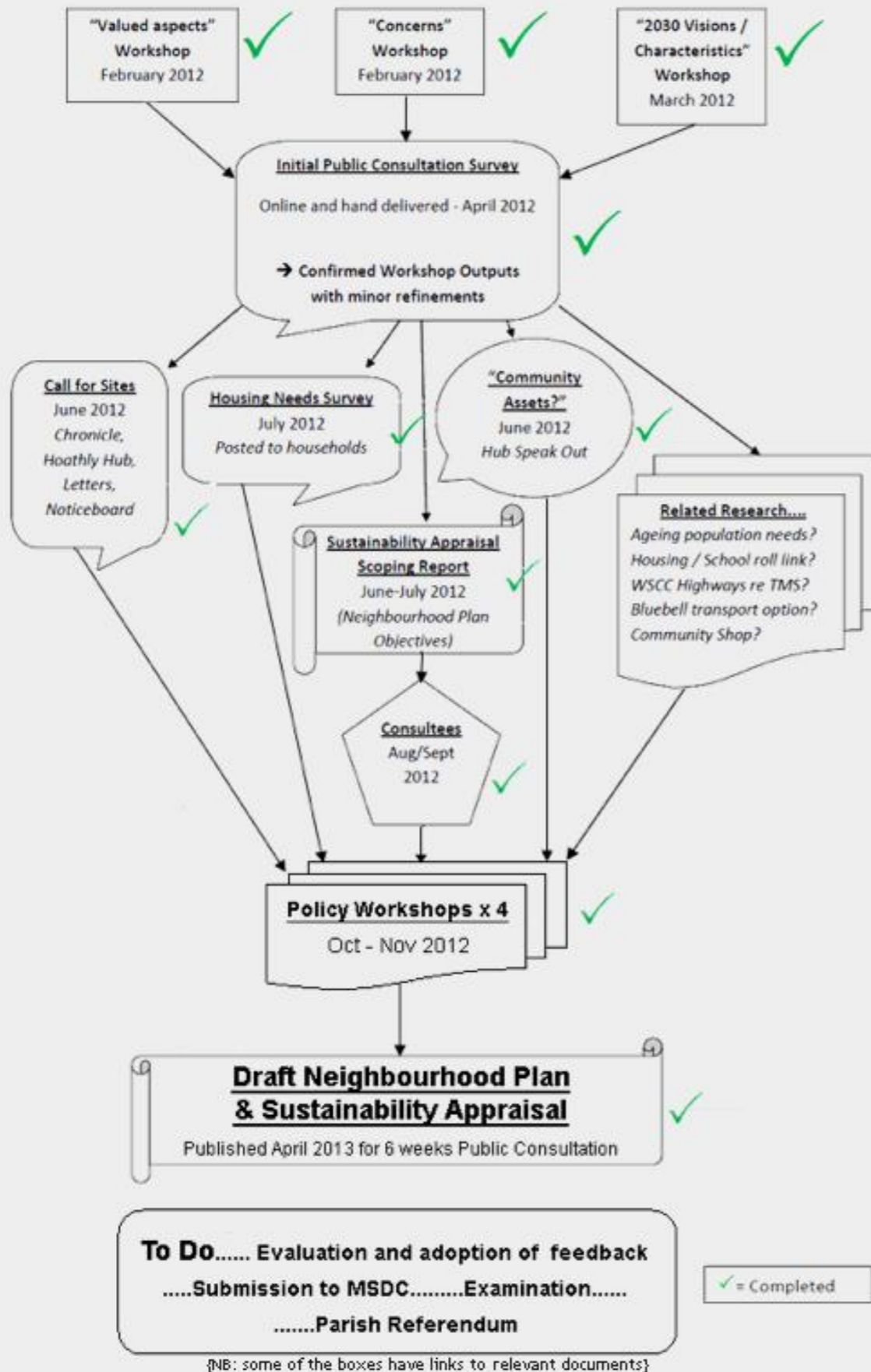
Not just
'consultation'
but engagement



The West Hoathly Neighbourhood Plan is nearing the completion of Stage 2



Roadmap to implementation



From the Hoathly Hub

Neighbourhood Plan Process

Next steps

Getting Started

Clarify why a plan is needed.
Publicise the intention to produce a plan.
Identify and contact key local partners.
Dialogue with the local planning authority.
Produce a project plan with costings.

Neighbourhood Area

Determine the neighbourhood area.
Submit neighbourhood area proposal.
LPA consults. *
LPA approve.

Neighbourhood Forum

Put together prospective neighbourhood forum.
Submit forum proposal.
LPA consults. *
LPA determines area.

Community Engagement & Involvement

Publicity.
Engage local partners.
Initial community engagement (broad issues).
Provide feedback.
Ongoing community engagement (aims, content, detail).

Building the Evidence Base

Review existing evidence.
Identify gaps in evidence.
Compile new evidence.
Analysis of evidence.

Themes, Aims, Vision, Options

Identify key issues and themes.
Prioritise issues and themes.
Develop key aims.
Look at options.

Writing the Plan

Policies, proposals, site allocations.
Consider sustainability, diversity, equality, delivery.

Consultation

Consultation on plan. *
Amend plan.

Submission

Submit to LPA.
LPA publicises. *

Independent Examination

LPA appoints examiner.
Examination takes place.
Examiner's Report.

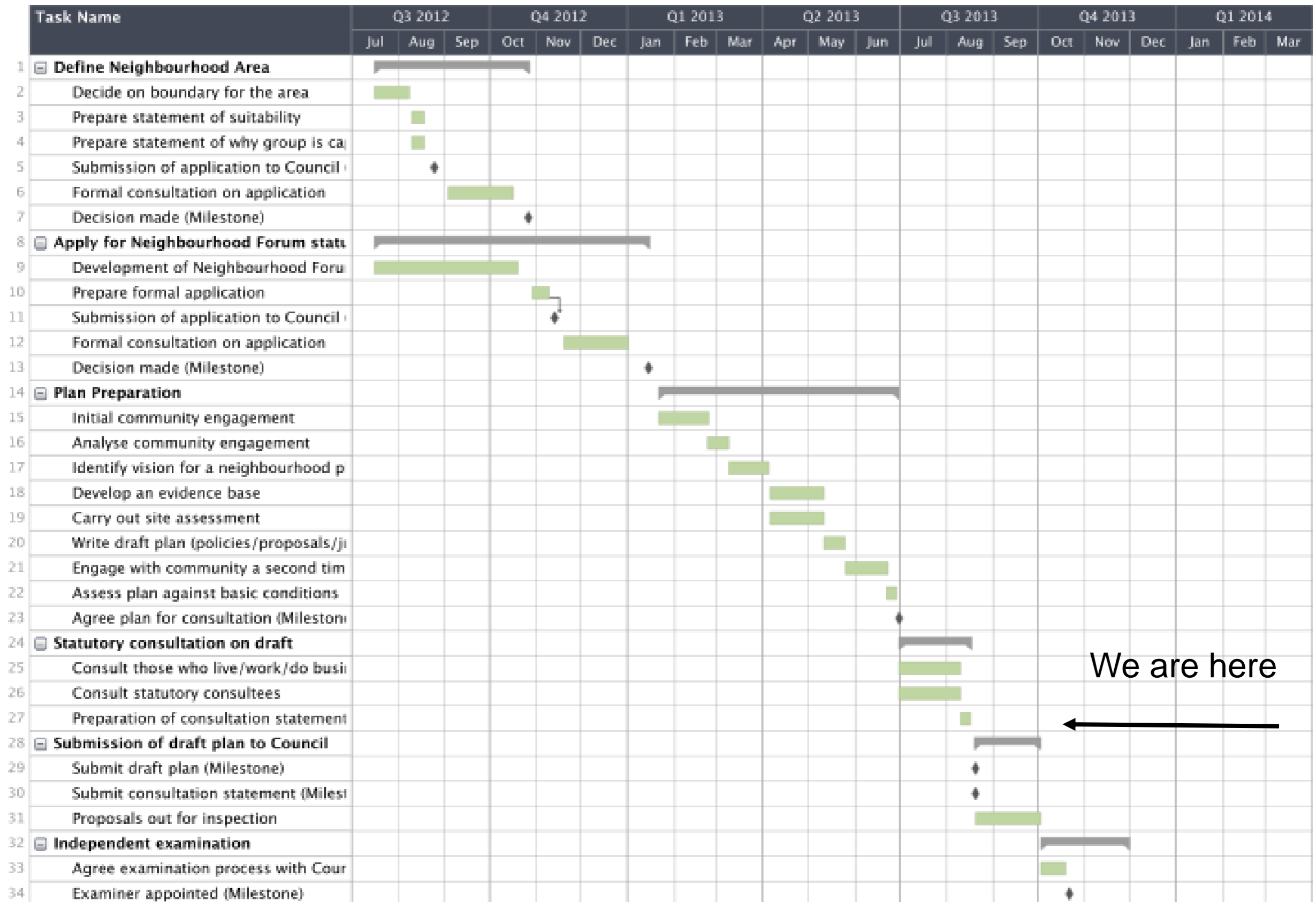
Referendum

Publicise referendum. **
Referendum.

The plan is made

We are here

Ourtown Neighbourhood Plan Project Plan



We are here



Next steps

Consultation - amend Plan
Discuss with MSDC officers 29 July
Parish Council agrees to submission 29 July
Any further amendments - place on Hoathly Hub
Check with statutory consultees
Submit to MSDC

MSDC publicises notifies those who are referred to in the Consultation Statement
and seeks comments for 6 weeks

MSDC appoints independent examiner
Independent examination takes place
Examiner reports

Any modifications agreed with Parish Council and MSDC publicise them on their
website

Referendum

If over 50% of those voting are in favour:

Plan is MADE = adopted by MSDC

Planning Permission decisions need to be in accordance with the Neighbourhood
Plan and MSDC Plan policies unless material considerations indicate
otherwise

The Planning Cycle



West Hoathly Neighbourhood Plan

PROGRAMME - Workshop 27 July 2013

TIMINGS ARE FLEXIBLE

John Downe. **Progress on the Neighbourhood Plan. Changes resulting from the 22 June workshop.**

Comments received from residents.

10.15 Using Post-Its, please look at the information displayed and write your comments and suggestions for wording.

10.30 Questions about the policies and changes.

WHP13 Site for New Homes: Discussion on proposal, alternative approaches and policy wording.

11.00 Strategic Environmental Assessment. Considering the draft Sustainability Appraisal. This can be done by working in groups on each table top, or everyone in open session can work together using the matrix sheets.

Consider the alternative sites. Think about their viability. Suggest the environmental impacts.

11.45 Open session. Results of the working.

Questions.

Discussion on the way forward

12.00 End